

FREEHOLD



House - Terraced

14 TAVERHAM ROAD, DRAYTON, NORWICH, NR8 6RX

Guide Price

£240,000

FEATURES

- CONSERVATORY / BREAKFAST ROOM
- LOFT ROOM
- PARKING
- ENCLOSED LARGER GARDEN
- TWO DOUBLE BEDROOMS
- LOW MAINTENANCE GARDEN
- GENEROUS KITCHEN
- NEEDS YOU TO MAKE IT HOME



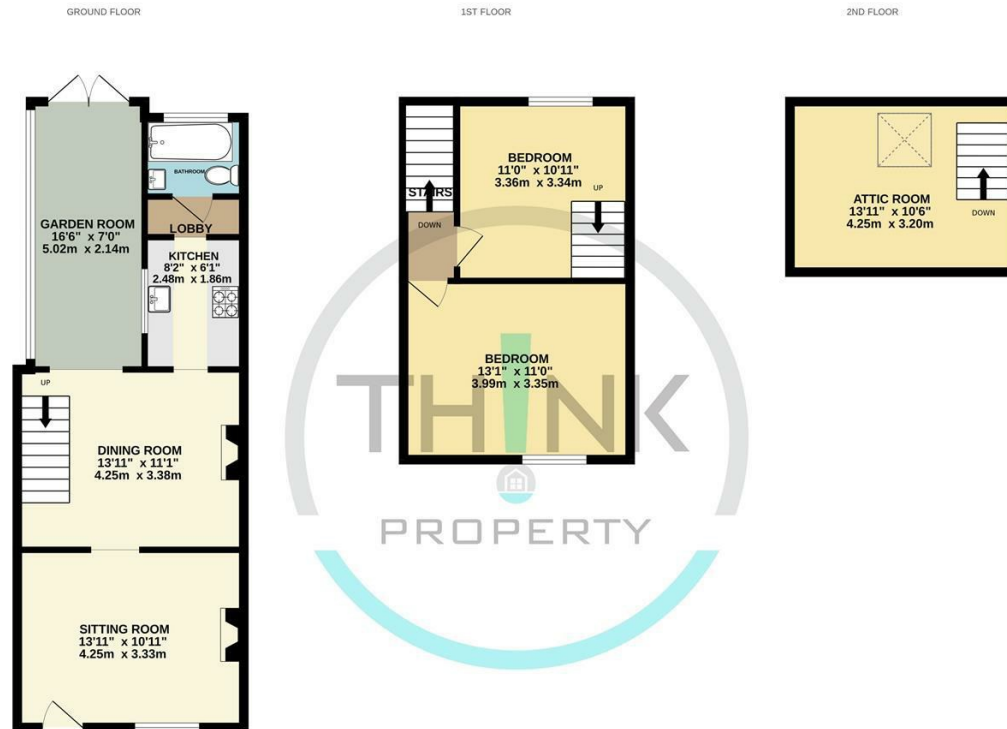
2 Bedroom House - Terraced located in Norwich

Don't miss out on this incredible opportunity to own a character-filled 2-bedroom railway cottage with endless potential. Whether you're a first-time buyer, a growing family, or a creative individual, this home has the foundation to become your perfect sanctuary. Contact us today to arrange a viewing and start envisioning the possibilities! This means this cottage is **READY TO BE YOUR NEXT HOME - VIEW TODAY** Guide Price - £240,000-£250,000.

Call us on
01603 338433

norwich@thinkproperty.ltd
<https://www.thinkproperty.ltd/>

Council Tax Band
B



Whilst every attempt has been made to ensure the accuracy of the floorplan contained here, measurements of doors, windows, rooms and any other items are approximate and no responsibility is taken for any error, omission or mis-statement. This plan is for illustrative purposes only and should be used as such by any prospective purchaser. The services, systems and appliances shown have not been tested and no guarantee as to their operability or efficiency can be given.
Made with Metropix ©2023

Energy Efficiency Rating		Current	Potential
<i>Very energy efficient - lower running costs</i>			
(92 plus)	A		85
(81-91)	B		
(69-80)	C		
(55-68)	D	65	
(39-54)	E		
(21-38)	F		
(1-20)	G		
<i>Not energy efficient - higher running costs</i>			
England & Wales		EU Directive 2002/91/EC	

Agents Note: Whilst every care has been taken to prepare these particulars, they are for guidance purposes only. All measurements are approximate and are for general guidance purposes only and whilst every care has been taken to ensure their accuracy, they should not be relied upon and potential buyers are advised to recheck the measurements.

